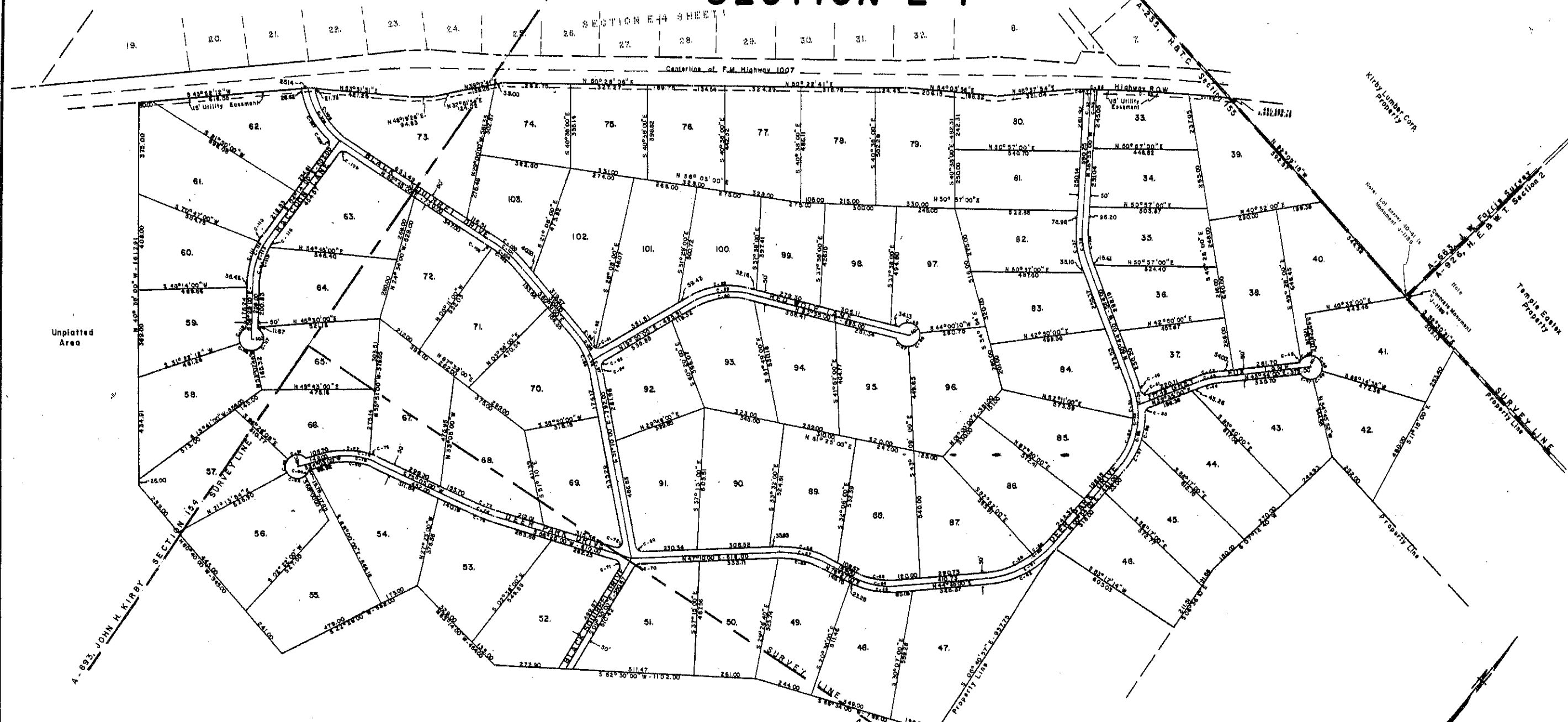



RAYBURN COUNTRY SECTION E-4



CURVE INFORMATION

Curve No.	Radius	Arc	Curve No.	Radius	Arc	Curve No.	Radius	Arc
C-32	7579.40	29.06	C-57	360.28	153.34	C-82	50.00	63.12
C-33	7579.40	25.02	C-58	377.99	83.76	C-83	50.00	95.81
C-34	7579.40	44.13	C-59	377.99	204.23	C-84	50.00	23.90
C-35	7579.40	393.48	C-60	377.99	287.97	C-85	50.00	113.52
C-36	7579.40	666.22	C-61	402.99	307.01	C-86	50.00	80.03
C-37	375.09	156.32	C-62	427.99	326.06	C-87	50.00	68.25
C-38	350.09	147.77	C-63	237.42	132.19	C-88	329.91	256.71
C-39	325.09	137.22	C-64	262.42	146.05	C-89	304.91	237.25
C-40	360.28	23.65	C-65	287.42	160.02	C-90	279.91	217.80
C-41	25.00	40.77	C-66	407.77	206.41	C-91	25.00	16.94
C-42	423.12	105.73	C-67	282.77	195.62	C-92	25.00	12.89
C-43	396.12	99.48	C-68	357.77	192.85	C-93	25.00	32.86
C-44	373.12	93.23	C-69	25.00	35.63	C-94	406.86	34.08
C-45	50.00	13.42	C-70	25.00	24.73	C-95	406.86	78.99
C-46	50.00	33.38	C-71	25.00	45.42	C-96	381.86	125.49
C-47	50.00	59.92	C-72	25.00	51.31	C-97	381.86	70.02
C-48	50.00	51.48	C-73	634.84	96.03	C-98	381.86	195.51
C-49	50.00	83.60	C-74	659.84	99.81	C-99	356.86	182.00
C-50	25.00	31.14	C-75	684.84	103.59	C-100	704.94	205.88
C-51	310.28	124.24	C-76	232.23	33.97	C-101	679.94	196.57
C-52	310.28	209.53	C-77	292.23	175.31	C-102	654.94	40.55
C-53	310.28	333.77	C-78	292.23	209.28	C-103	654.94	150.72
C-54	335.28	75.59	C-79	267.23	191.37	C-104	654.94	191.27
C-55	335.28	285.07	C-80	242.23	173.47	C-105	285.41	224.83
C-56	360.28	115.02	C-81	50.00	78.96	C-106	310.41	244.52

 Rayburn Country Surveying Company Jasper, Texas	RAYBURN COUNTRY SECTION E-4	Scale 1" = 200' P.C. 1974 2 of 2
EAST TEXAS SURVEYING COMPANY JASPER, TEXAS		