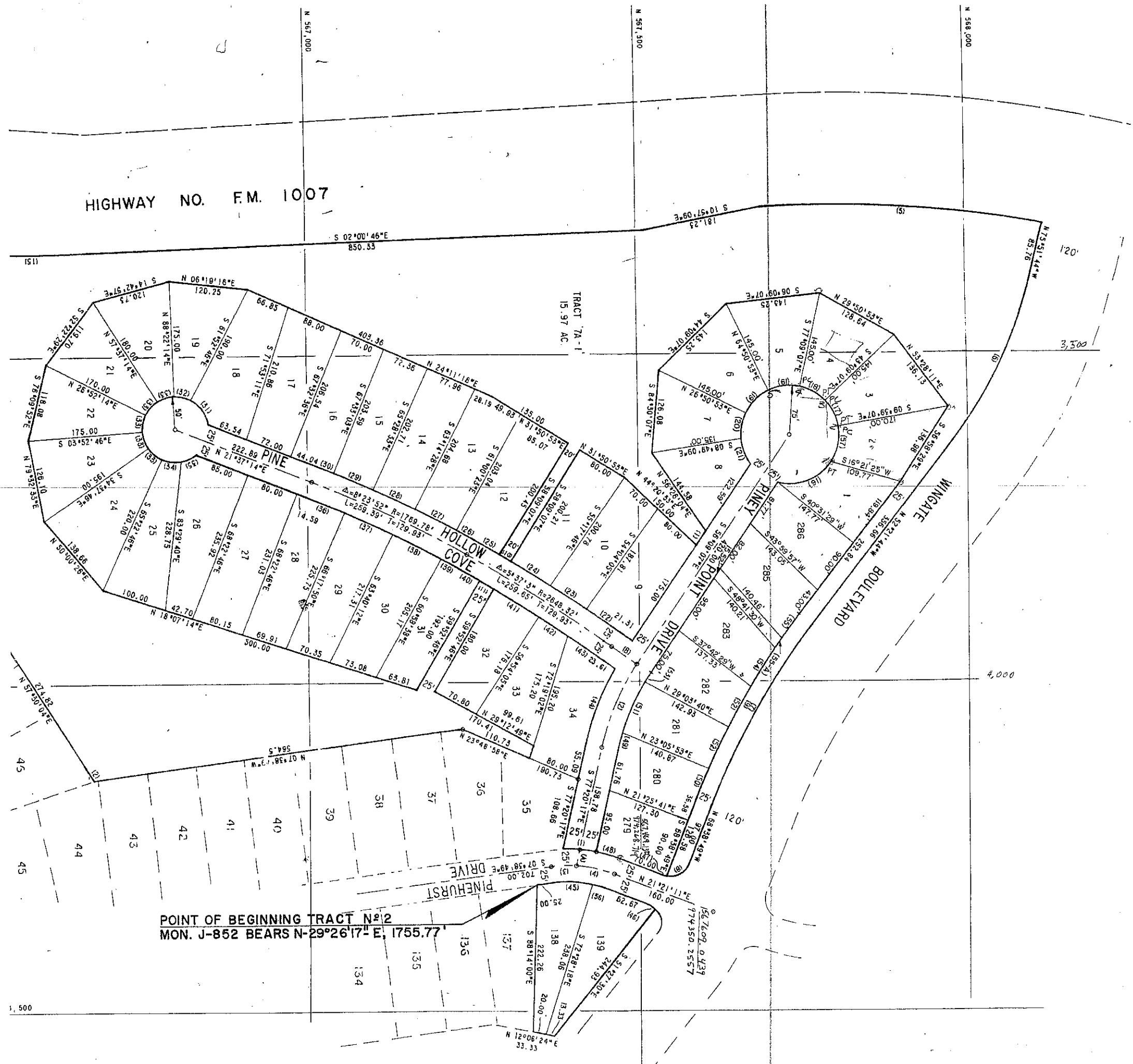


SECTION 7A



HIGHWAY NO. F.M. 1007

TRACT 7A-1
15.97 AC.

POINT OF BEGINNING TRACT No 2
MON. J-852 BEARS N-29°26'17" E, 1755.77'

PINEHURST DRIVE

PINE POINT DRIVE

HOLLOW COVE DRIVE

WINGATE BOULEVARD

PINE

PINEY

