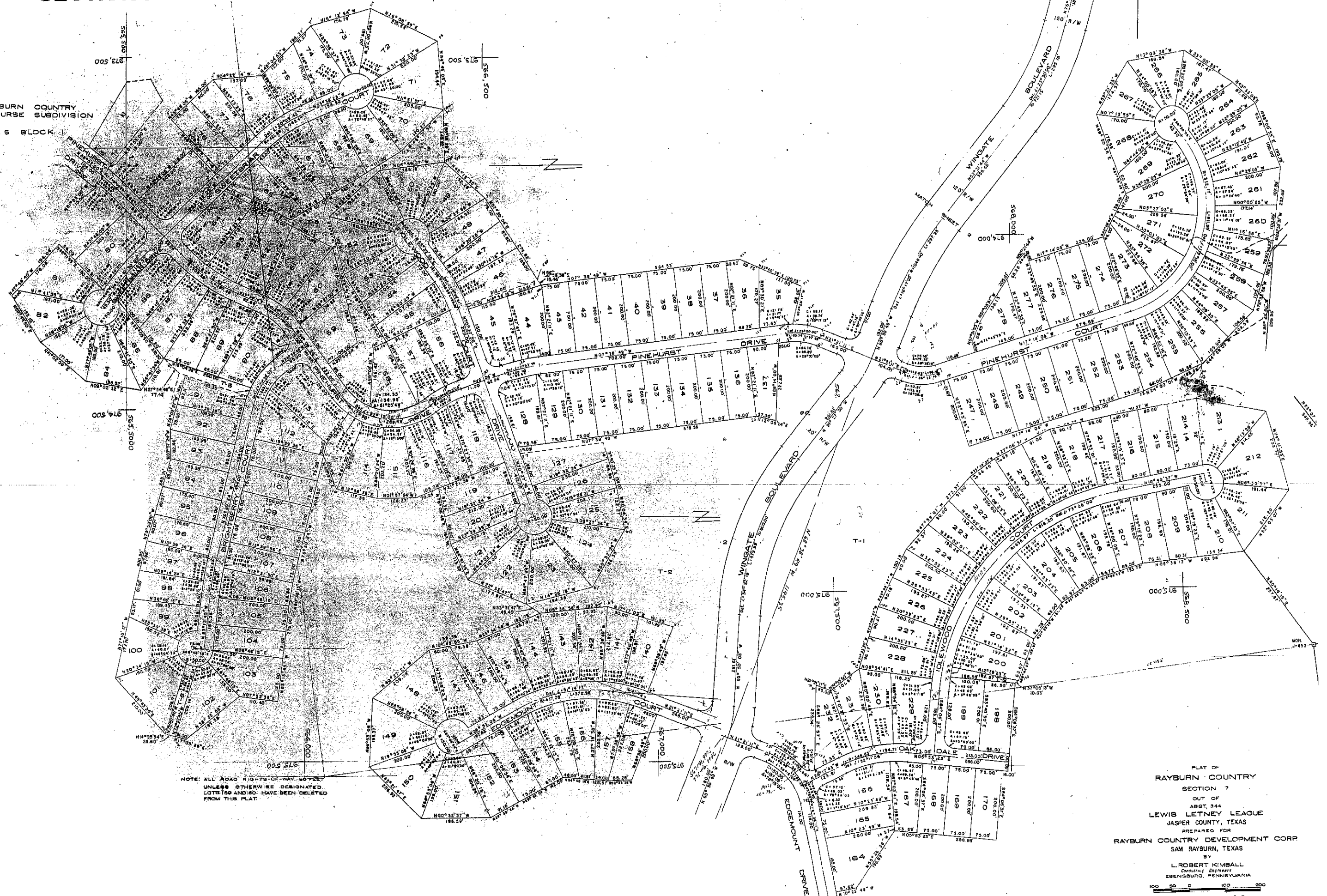


SECTION 7

UNLESS OTHERWISE DESIGNATED
LOTS 1, THROUGH 34, 128 AND 129
DELETED FROM THIS PLAT.

RAYBURN COUNTRY
COURSE SUBDIVISION
SEC. 5 BLOCK



NOTE: ALL ROAD RIGHTS-OF-WAY 60 FEET
UNLESS OTHERWISE DESIGNATED.
LOTS 128 AND 129 HAVE BEEN DELETED
FROM THIS PLAT.

PLAT OF
RAYBURN COUNTRY
SECTION 7
OUT OF
ABBT. 344
LEWIS LETNEY LEAGUE
JASPER COUNTY, TEXAS
PREPARED FOR
RAYBURN COUNTRY DEVELOPMENT CORP
SAM RAYBURN, TEXAS
BY
L. ROBERT KIMBALL
Consulting Engineer
EBENSBURG, PENNSYLVANIA

100 50 0 100 200