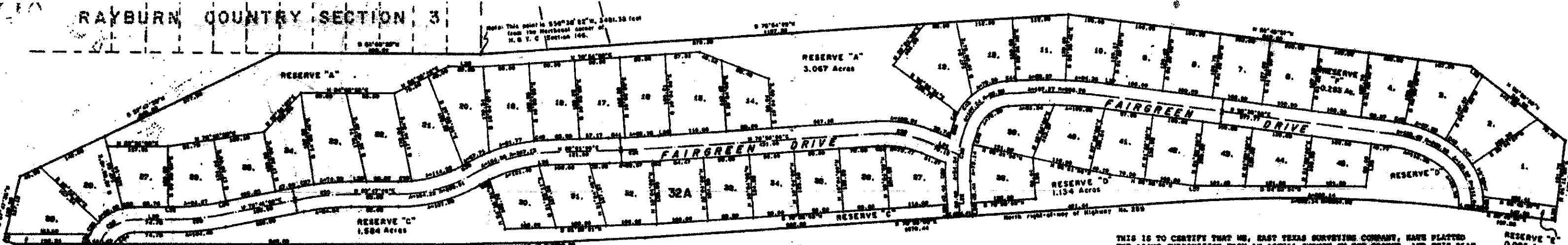


RAYBURN COUNTRY SECTION 3

Note: This point is 856°30' 02" W, 2481.18 feet from the Northeast corner of N. S. T. C. Section 146.



RESERVE "B" 0.072 Acres

RESERVE "C" 1.884 Acres

RESERVE "A" 3.067 Acres

RESERVE "D" 1.134 Acres

RESERVE "E" 0.085 Acres

SECTION 41

THIS IS TO CERTIFY THAT WE, EAST TEXAS SURVEYING COMPANY, HAVE PLATTED THE ABOVE SUBDIVISION FROM AN ACTUAL SURVEY ON THE GROUND, AND THIS PLAT CORRECTLY REPRESENTS THAT SURVEY.

EAST TEXAS SURVEYING COMPANY