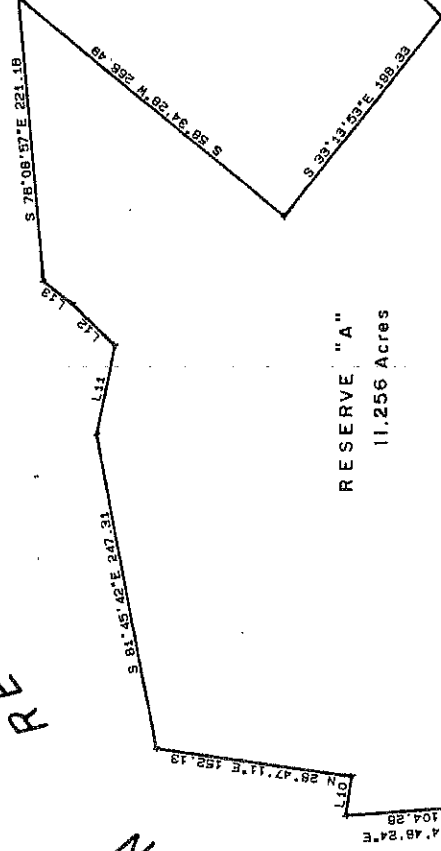


ON ABSTR
LEAGUE I

RESERVE "A"
11.256 Acres

SAM RAYBURN



U.S. Corps of Eng.
Fee Line

RESERVE "A"

COVE POINT

PLATWOOD DRIVE

COVINT DRIVE

RESERVE "A"

U.S. Corps of Eng.
Fee Line

Approx.
Easement
Contour

Approx.
Easement
Contour

RAYBURN
COUNTRY
SECTION
31

PARKSIDE DRIVE

CORD

SECTION 32

CLERK OF THE COUNTY COURT, TEXAS, DO HEREBY CERTIFY THAT THIS CERTIFICATE OF AUTHENTICATION WAS PREPARED BY ME IN MY OFFICE ON THE 15 DAY OF August 1952, AND DULY RECORDED ON THE 15 DAY OF August 1952, AT A.M., IN VOLUME 1, PAGE 155 OF THE PLAT BOOK FOR SAID COUNTY.

