

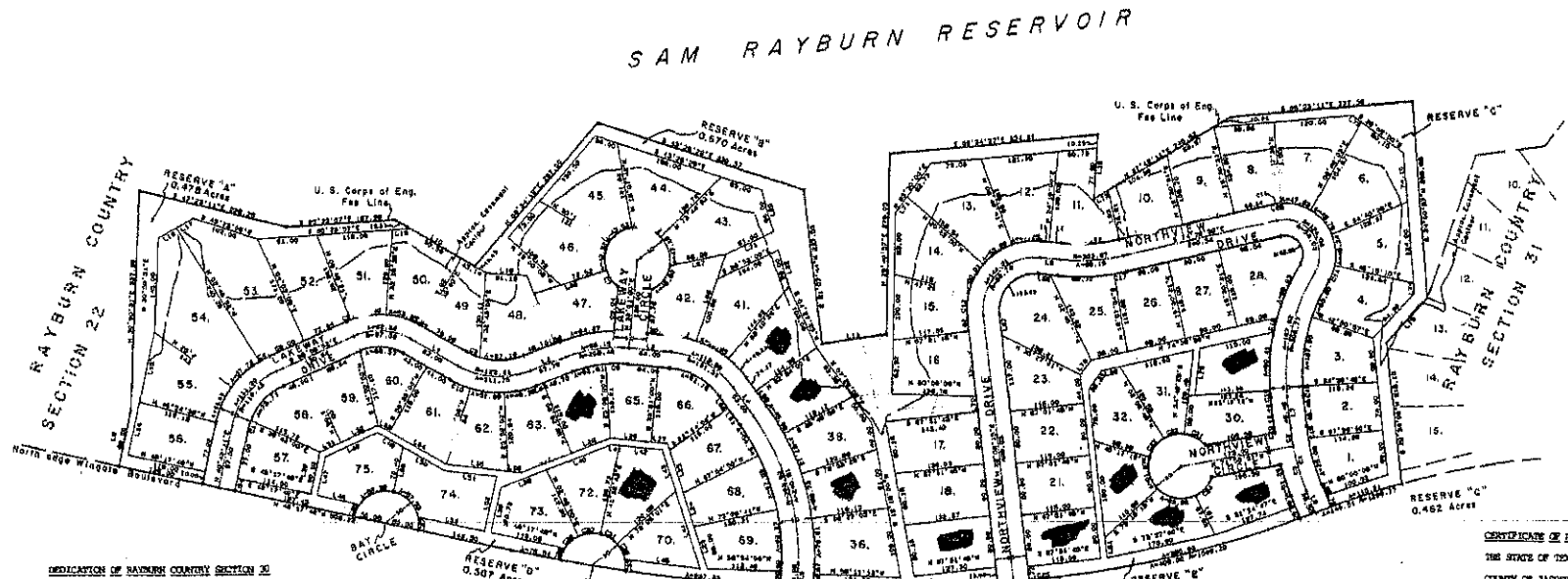
16677

# RAYBURN COUNTRY SECTION 30

A SUBDIVISION OF 25.121 ACRES OF LAND ON ABSTRACT 344, THE LEWIS LETNEY LEAGUE IN JASPER COUNTY, TEXAS.

LINE	BEARING	DISTANCE
1	N 81°27'00"E	62.79
2	S 84°00'00"E	67.79
3	S 87°00'00"E	22.00
4	S 84°00'00"E	66.54
5	S 84°00'00"E	66.54
6	S 84°00'00"E	66.54
7	S 84°00'00"E	66.54
8	S 84°00'00"E	66.54
9	S 84°00'00"E	66.54
10	S 84°00'00"E	66.54
11	S 84°00'00"E	66.54
12	S 84°00'00"E	66.54
13	S 84°00'00"E	66.54
14	S 84°00'00"E	66.54
15	S 84°00'00"E	66.54
16	S 84°00'00"E	66.54
17	S 84°00'00"E	66.54
18	S 84°00'00"E	66.54
19	S 84°00'00"E	66.54
20	S 84°00'00"E	66.54
21	S 84°00'00"E	66.54
22	S 84°00'00"E	66.54
23	S 84°00'00"E	66.54
24	S 84°00'00"E	66.54
25	S 84°00'00"E	66.54
26	S 84°00'00"E	66.54
27	S 84°00'00"E	66.54
28	S 84°00'00"E	66.54
29	S 84°00'00"E	66.54
30	S 84°00'00"E	66.54
31	S 84°00'00"E	66.54
32	S 84°00'00"E	66.54
33	S 84°00'00"E	66.54
34	S 84°00'00"E	66.54
35	S 84°00'00"E	66.54
36	S 84°00'00"E	66.54
37	S 84°00'00"E	66.54
38	S 84°00'00"E	66.54
39	S 84°00'00"E	66.54
40	S 84°00'00"E	66.54
41	S 84°00'00"E	66.54
42	S 84°00'00"E	66.54
43	S 84°00'00"E	66.54
44	S 84°00'00"E	66.54
45	S 84°00'00"E	66.54
46	S 84°00'00"E	66.54
47	S 84°00'00"E	66.54
48	S 84°00'00"E	66.54
49	S 84°00'00"E	66.54
50	S 84°00'00"E	66.54
51	S 84°00'00"E	66.54
52	S 84°00'00"E	66.54
53	S 84°00'00"E	66.54
54	S 84°00'00"E	66.54
55	S 84°00'00"E	66.54
56	S 84°00'00"E	66.54
57	S 84°00'00"E	66.54
58	S 84°00'00"E	66.54
59	S 84°00'00"E	66.54
60	S 84°00'00"E	66.54
61	S 84°00'00"E	66.54
62	S 84°00'00"E	66.54
63	S 84°00'00"E	66.54
64	S 84°00'00"E	66.54
65	S 84°00'00"E	66.54
66	S 84°00'00"E	66.54
67	S 84°00'00"E	66.54
68	S 84°00'00"E	66.54
69	S 84°00'00"E	66.54
70	S 84°00'00"E	66.54
71	S 84°00'00"E	66.54
72	S 84°00'00"E	66.54
73	S 84°00'00"E	66.54
74	S 84°00'00"E	66.54
75	S 84°00'00"E	66.54
76	S 84°00'00"E	66.54
77	S 84°00'00"E	66.54
78	S 84°00'00"E	66.54
79	S 84°00'00"E	66.54
80	S 84°00'00"E	66.54
81	S 84°00'00"E	66.54
82	S 84°00'00"E	66.54
83	S 84°00'00"E	66.54
84	S 84°00'00"E	66.54
85	S 84°00'00"E	66.54
86	S 84°00'00"E	66.54
87	S 84°00'00"E	66.54
88	S 84°00'00"E	66.54
89	S 84°00'00"E	66.54
90	S 84°00'00"E	66.54
91	S 84°00'00"E	66.54
92	S 84°00'00"E	66.54
93	S 84°00'00"E	66.54
94	S 84°00'00"E	66.54
95	S 84°00'00"E	66.54
96	S 84°00'00"E	66.54
97	S 84°00'00"E	66.54
98	S 84°00'00"E	66.54
99	S 84°00'00"E	66.54
100	S 84°00'00"E	66.54

LINE	BEARING	DISTANCE
1	S 84°00'00"E	66.54
2	S 84°00'00"E	66.54
3	S 84°00'00"E	66.54
4	S 84°00'00"E	66.54
5	S 84°00'00"E	66.54
6	S 84°00'00"E	66.54
7	S 84°00'00"E	66.54
8	S 84°00'00"E	66.54
9	S 84°00'00"E	66.54
10	S 84°00'00"E	66.54
11	S 84°00'00"E	66.54
12	S 84°00'00"E	66.54
13	S 84°00'00"E	66.54
14	S 84°00'00"E	66.54
15	S 84°00'00"E	66.54
16	S 84°00'00"E	66.54
17	S 84°00'00"E	66.54
18	S 84°00'00"E	66.54
19	S 84°00'00"E	66.54
20	S 84°00'00"E	66.54
21	S 84°00'00"E	66.54
22	S 84°00'00"E	66.54
23	S 84°00'00"E	66.54
24	S 84°00'00"E	66.54
25	S 84°00'00"E	66.54
26	S 84°00'00"E	66.54
27	S 84°00'00"E	66.54
28	S 84°00'00"E	66.54
29	S 84°00'00"E	66.54
30	S 84°00'00"E	66.54
31	S 84°00'00"E	66.54
32	S 84°00'00"E	66.54
33	S 84°00'00"E	66.54
34	S 84°00'00"E	66.54
35	S 84°00'00"E	66.54
36	S 84°00'00"E	66.54
37	S 84°00'00"E	66.54
38	S 84°00'00"E	66.54
39	S 84°00'00"E	66.54
40	S 84°00'00"E	66.54
41	S 84°00'00"E	66.54
42	S 84°00'00"E	66.54
43	S 84°00'00"E	66.54
44	S 84°00'00"E	66.54
45	S 84°00'00"E	66.54
46	S 84°00'00"E	66.54
47	S 84°00'00"E	66.54
48	S 84°00'00"E	66.54
49	S 84°00'00"E	66.54
50	S 84°00'00"E	66.54
51	S 84°00'00"E	66.54
52	S 84°00'00"E	66.54
53	S 84°00'00"E	66.54
54	S 84°00'00"E	66.54
55	S 84°00'00"E	66.54
56	S 84°00'00"E	66.54
57	S 84°00'00"E	66.54
58	S 84°00'00"E	66.54
59	S 84°00'00"E	66.54
60	S 84°00'00"E	66.54
61	S 84°00'00"E	66.54
62	S 84°00'00"E	66.54
63	S 84°00'00"E	66.54
64	S 84°00'00"E	66.54
65	S 84°00'00"E	66.54
66	S 84°00'00"E	66.54
67	S 84°00'00"E	66.54
68	S 84°00'00"E	66.54
69	S 84°00'00"E	66.54
70	S 84°00'00"E	66.54
71	S 84°00'00"E	66.54
72	S 84°00'00"E	66.54
73	S 84°00'00"E	66.54
74	S 84°00'00"E	66.54
75	S 84°00'00"E	66.54
76	S 84°00'00"E	66.54
77	S 84°00'00"E	66.54
78	S 84°00'00"E	66.54
79	S 84°00'00"E	66.54
80	S 84°00'00"E	66.54
81	S 84°00'00"E	66.54
82	S 84°00'00"E	66.54
83	S 84°00'00"E	66.54
84	S 84°00'00"E	66.54
85	S 84°00'00"E	66.54
86	S 84°00'00"E	66.54
87	S 84°00'00"E	66.54
88	S 84°00'00"E	66.54
89	S 84°00'00"E	66.54
90	S 84°00'00"E	66.54
91	S 84°00'00"E	66.54
92	S 84°00'00"E	66.54
93	S 84°00'00"E	66.54
94	S 84°00'00"E	66.54
95	S 84°00'00"E	66.54
96	S 84°00'00"E	66.54
97	S 84°00'00"E	66.54
98	S 84°00'00"E	66.54
99	S 84°00'00"E	66.54
100	S 84°00'00"E	66.54



**DEDICATION OF RAYBURN COUNTRY SECTION 30**  
 THE STATE OF TEXAS  
 COUNTY OF JASPER

BEFORE ME, THE UNDERSIGNED AUTHORITY, ON THIS DAY PERSONALLY APPEARED JOSEPH N. PATRICK, OF THE STATE OF TEXAS, COUNTY OF JASPER, AS PRESIDENT OF EAST TEXAS SURVEYING CO., INC., A TEXAS CORPORATION, OWNER OF THE PROPERTY SUBDIVIDED IN THIS MAP AND FORWARDED MAP OF RAYBURN COUNTRY SECTION 30, ACTING HEREIN BY AND THROUGH JOSEPH N. PATRICK, SENIOR SURVEYOR SAID PROPERTY IN ACCORDANCE WITH THIS MAP AND DESIGNATES SAID SUBDIVISION AS, RAYBURN COUNTRY SECTION 30, A SUBDIVISION OF 25.121 ACRES, OUT OF ABSTRACT 344, THE LEWIS LETNEY LEAGUE, JASPER COUNTY, TEXAS, AND HEREBY DEDICATES TO PUBLIC USE, AS SUCH, THE STRIPS SHOWN THEREON.

IN WITNESS WHEREOF, EAST TEXAS SURVEYING CO., HAS CAUSED THESE PRESENTS TO BE SIGNED BY JOSEPH N. PATRICK, THEREunto AUTHORIZED BY ACTION OF ITS BOARD OF DIRECTORS.

ATTEST:  
*Joseph N. Patrick*  
 JOSEPH N. PATRICK, PRESIDENT

THE STATE OF TEXAS  
 COUNTY OF JASPER

BEFORE ME, THE UNDERSIGNED AUTHORITY, ON THIS DAY PERSONALLY APPEARED JOSEPH N. PATRICK, OF THE STATE OF TEXAS, COUNTY OF JASPER, AS PRESIDENT OF EAST TEXAS SURVEYING CO., INC., A TEXAS CORPORATION, OWNER OF THE PROPERTY SUBDIVIDED IN THIS MAP AND FORWARDED MAP OF RAYBURN COUNTRY SECTION 30, ACTING HEREIN BY AND THROUGH JOSEPH N. PATRICK, SENIOR SURVEYOR SAID PROPERTY IN ACCORDANCE WITH THIS MAP AND DESIGNATES SAID SUBDIVISION AS, RAYBURN COUNTRY SECTION 30, A SUBDIVISION OF 25.121 ACRES, OUT OF ABSTRACT 344, THE LEWIS LETNEY LEAGUE, JASPER COUNTY, TEXAS, AND HEREBY DEDICATES TO PUBLIC USE, AS SUCH, THE STRIPS SHOWN THEREON.

IN WITNESS WHEREOF, EAST TEXAS SURVEYING CO., HAS CAUSED THESE PRESENTS TO BE SIGNED BY JOSEPH N. PATRICK, THEREunto AUTHORIZED BY ACTION OF ITS BOARD OF DIRECTORS.

ATTEST:  
*Joseph N. Patrick*  
 JOSEPH N. PATRICK, PRESIDENT

**CERTIFICATE OF APPROVAL AND ACCEPTANCE**  
 THE STATE OF TEXAS  
 COUNTY OF JASPER

APPROVED BY THE COMMISSIONER'S COURT OF JASPER COUNTY, TEXAS, ON June 3, 1983

*Harold Kennedy*  
 COUNTY CLERK

*Edna Lee Green*  
 COMMISSIONER, DISTRICT NO. 1

*Edna Lee Green*  
 COMMISSIONER, DISTRICT NO. 4

*Edna Lee Green*  
 COMMISSIONER, DISTRICT NO. 2

**CERTIFICATE OF RECORD**  
 THE STATE OF TEXAS  
 COUNTY OF JASPER

I, DWIGHT STOTT, CLERK OF THE COUNTY COURT, TEXAS, DO HEREBY CERTIFY THAT THE WITHIN INSTRUMENT WITH ITS CERTIFICATE OF APPROVAL AND ACCEPTANCE WAS FILED FOR RECORD IN MY OFFICE ON THIS 5 DAY OF June, 1983, AT 11:30 O'CLOCK A.M., AND WAS RECORDED ON THE 37 DAY OF June, 1983, IN VOLUME 2, PAGE 77 OF THE PUBLIC RECORDS OF THIS SAID COUNTY.

WITNESSED BY HAND AND SEAL OF OFFICE, AT JASPER, THE DAY AND DATE LAST WRITTEN ABOVE.

(Seal) *Dwight Stott*  
 DWIGHT STOTT, CLERK, COUNTY COURT, JASPER COUNTY, TEXAS.

THIS IS TO CERTIFY THAT ME, EAST TEXAS SURVEYING CO., INC., HAVE PLATTED THE ABOVE SUBDIVISION FROM AN ACTUAL SURVEY OF THE GROUND, AND THAT THIS PLAT CORRECTLY REPRESENTS THAT SURVEY.

EAST TEXAS SURVEYING CO., INC.  
*J. C. Stott*  
 J. C. STOTT, REGISTERED PUBLIC SURVEYOR NO. 1410

STATE OF TEXAS  
 F. C. STOTT, REGISTERED PUBLIC SURVEYOR NO. 1410

DATE	REVISION	DESCRIPTION

**RAYBURN COUNTRY SECTION 30**  
 EAST TEXAS SURVEYING COMPANY  
 JASPER, TEXAS

