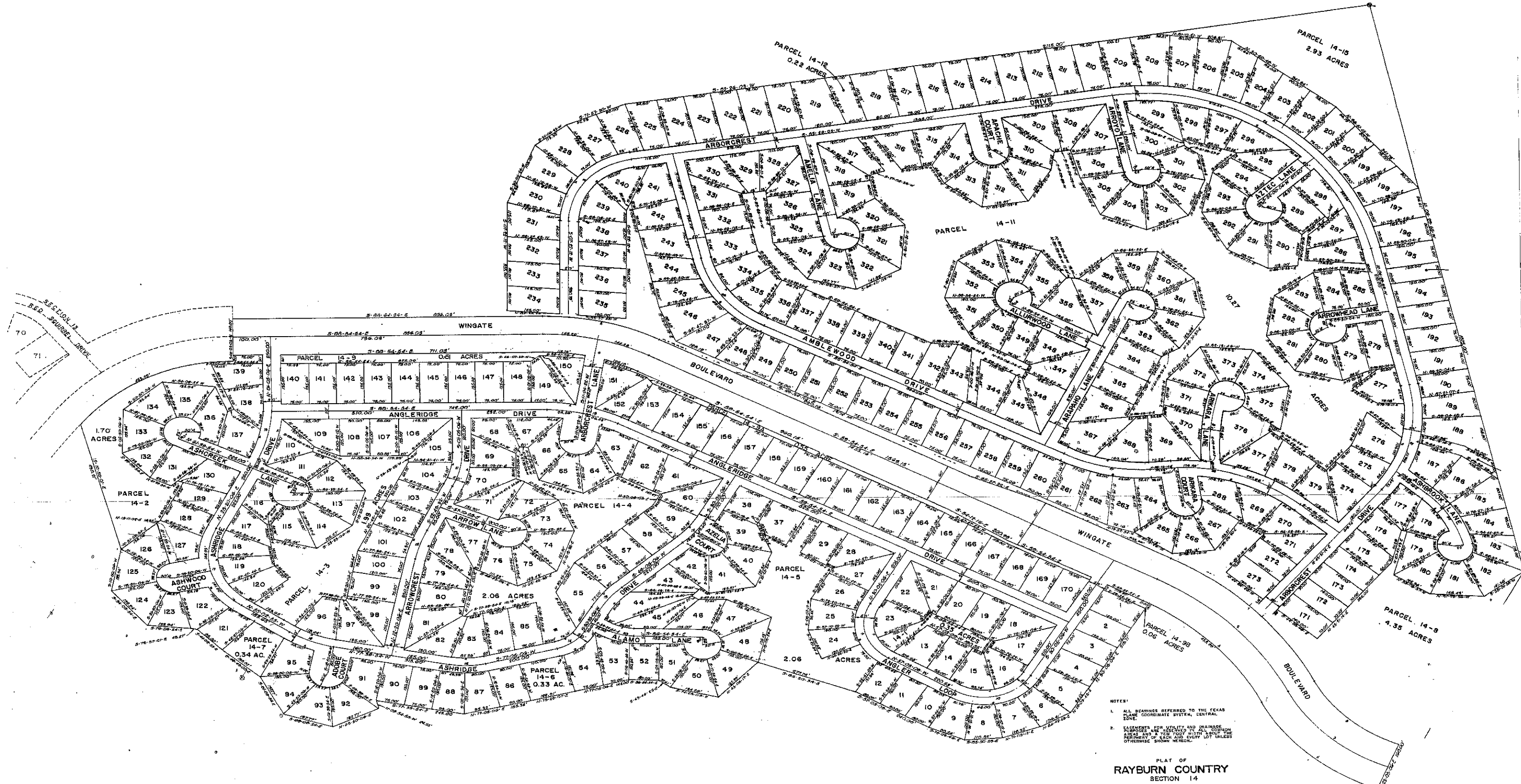


SECTION 14



NOTES:
 1. ALL BEARINGS REFERRED TO THE TEXAS PLANE COORDINATE SYSTEM, CENTRAL ZONE.
 2. EASEMENTS FOR UTILITY AND DRAINAGE AREAS AND A TEN FOOT WIDTH ABOUT THE PERIMETER OF EACH AND EVERY LOT UNLESS OTHERWISE SHOWN HERON.

PLAT OF
RAYBURN COUNTRY
 SECTION 14
 OUT OF
 ABST. 987
 H. & T. C. SECTION 152
 JASPER COUNTY, TEXAS

PREPARED FOR
 RAYBURN COUNTRY DEVELOPMENT CORPORATION
 SAM RAYBURN, TEXAS
 BY
 HENNINGSON, DURHAM & RICHARDSON, INC.
 ENGINEERS - PLANNERS - CONSULTANTS
 DALLAS, TEXAS

