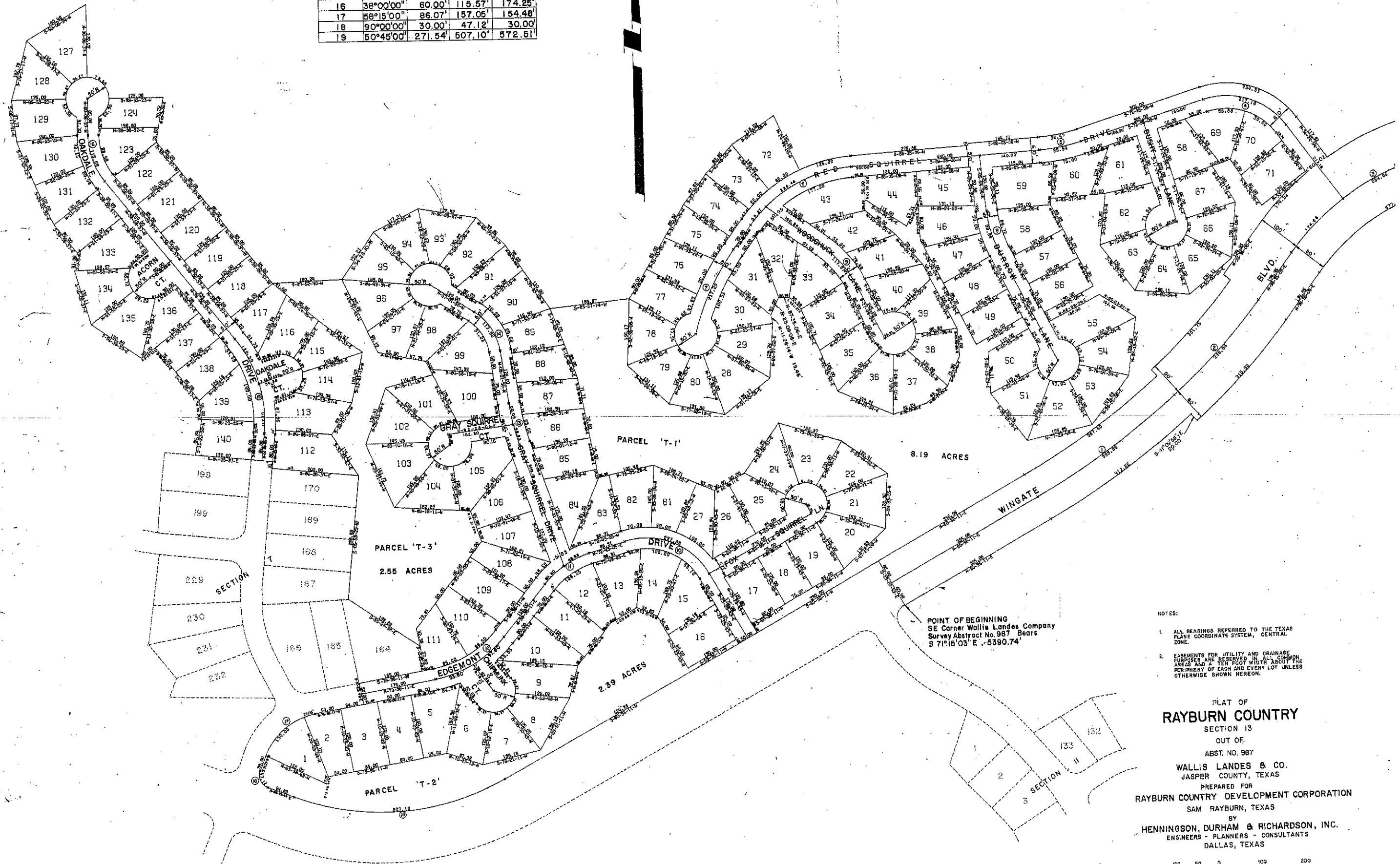


# SECTION 13

4	71°00'00"	125.00'	217.16'	175.24'
5	13°30'00"	50.00'	99.54'	422.45'
6	50°00'00"	150.00'	280.72'	321.68'
7	22°00'00"	110.00'	217.29'	565.90'
8	21°00'00"	50.00'	98.88'	269.78'
9	26°45'00"	60.00'	117.81'	252.34'
10	77°53'06"	35.00'	227.08'	167.05'
11	34°06'54"	65.00'	126.14'	211.85'
12	41°00'00"	100.00'	191.39'	267.46'
13	10°30'00"	50.00'	99.72'	544.15'
14	49°00'00"	60.00'	112.60'	131.66'
15	44°00'00"	125.00'	237.59'	309.39'
16	38°00'00"	80.00'	115.57'	174.25'
17	58°15'00"	86.07'	157.05'	154.48'
18	90°00'00"	30.00'	47.12'	30.00'
19	50°45'00"	271.54'	607.10'	572.51'



- NOTES:
1. ALL BEARINGS REFERRED TO THE TEXAS PLANE COORDINATE SYSTEM, CENTRAL ZONE.
  2. EASEMENTS FOR UTILITY AND DRAINAGE PURPOSES ARE RESERVED IN ALL COMMON AREAS AND A TEN FOOT WIDTH ABOUT THE PERIPHERY OF EACH AND EVERY LOT UNLESS OTHERWISE SHOWN HEREON.

PLAT OF  
**RAYBURN COUNTRY**  
 SECTION 13  
 OUT OF  
 ABST. NO. 987  
 WALLIS LANDES & CO.  
 JASPER COUNTY, TEXAS  
 PREPARED FOR  
 RAYBURN COUNTRY DEVELOPMENT CORPORATION  
 SAM RAYBURN, TEXAS  
 BY  
**HENNINGSON, DURHAM & RICHARDSON, INC.**  
 ENGINEERS - PLANNERS - CONSULTANTS  
 DALLAS, TEXAS