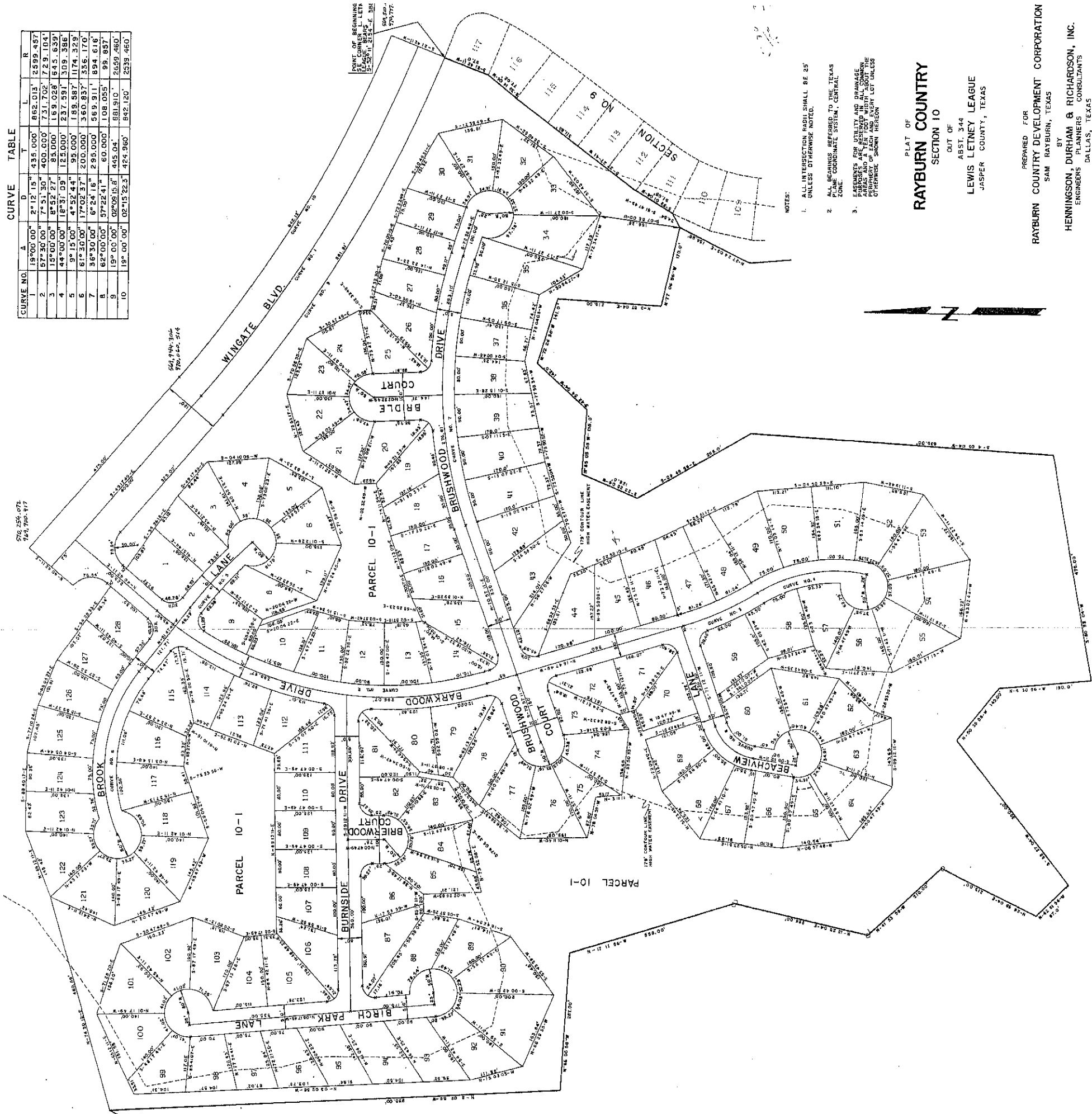


SECTION 10



CURVE TABLE

CURVE NO.	A	D	T	L	R
1	19°00'00"	2°12'15"	435.000'	862.013'	2599.487'
2	57°30'00"	7°51'30"	400.000'	731.702'	729.104'
3	15°00'00"	8°52'27"	85.000'	169.028'	645.639'
4	44°00'00"	18°31'09"	125.000'	237.591'	309.386'
5	9°15'00"	4°52'44"	95.000'	189.587'	1174.329'
6	61°30'00"	17°02'37"	200.000'	360.837'	336.170'
7	38°30'00"	6°24'16"	295.000'	569.911'	894.616'
8	62°00'00"	57°22'41"	60.000'	108.055'	99.837'
9	19°00'00"	02°00'51"	445.004'	881.910'	2659.460'
10	19°00'00"	02°15'22.3"	474.960'	842.120'	2539.460'

- NOTES:
1. ALL INTERSECTION RADII SHALL BE 25' UNLESS OTHERWISE NOTED.
 2. ALL BEARINGS REFERRED TO THE TEXAS PLANE COORDINATE SYSTEM, CENTRAL ZONE.
 3. EASEMENTS FOR UTILITY AND DRAINAGE ARE SHOWN IN ALL COMMON AREAS AND ARE REFERRED TO ALL COMMON PERIMETER OF EACH AND EVERY LOT UNLESS OTHERWISE SHOWN HEREON.

PLAT OF
RAYBURN COUNTRY
 SECTION 10
 OUT OF
 ABST. 344
 LEWIS LETNEY LEAGUE
 JASPER COUNTY, TEXAS

PREPARED FOR
RAYBURN COUNTRY DEVELOPMENT CORPORATION
 SAN RAYBURN, TEXAS
 BY
HENNINGSON, DURHAM & RICHARDSON, INC.
 ENGINEERS PLANNERS & CONSULTANTS
 DALLAS, TEXAS

